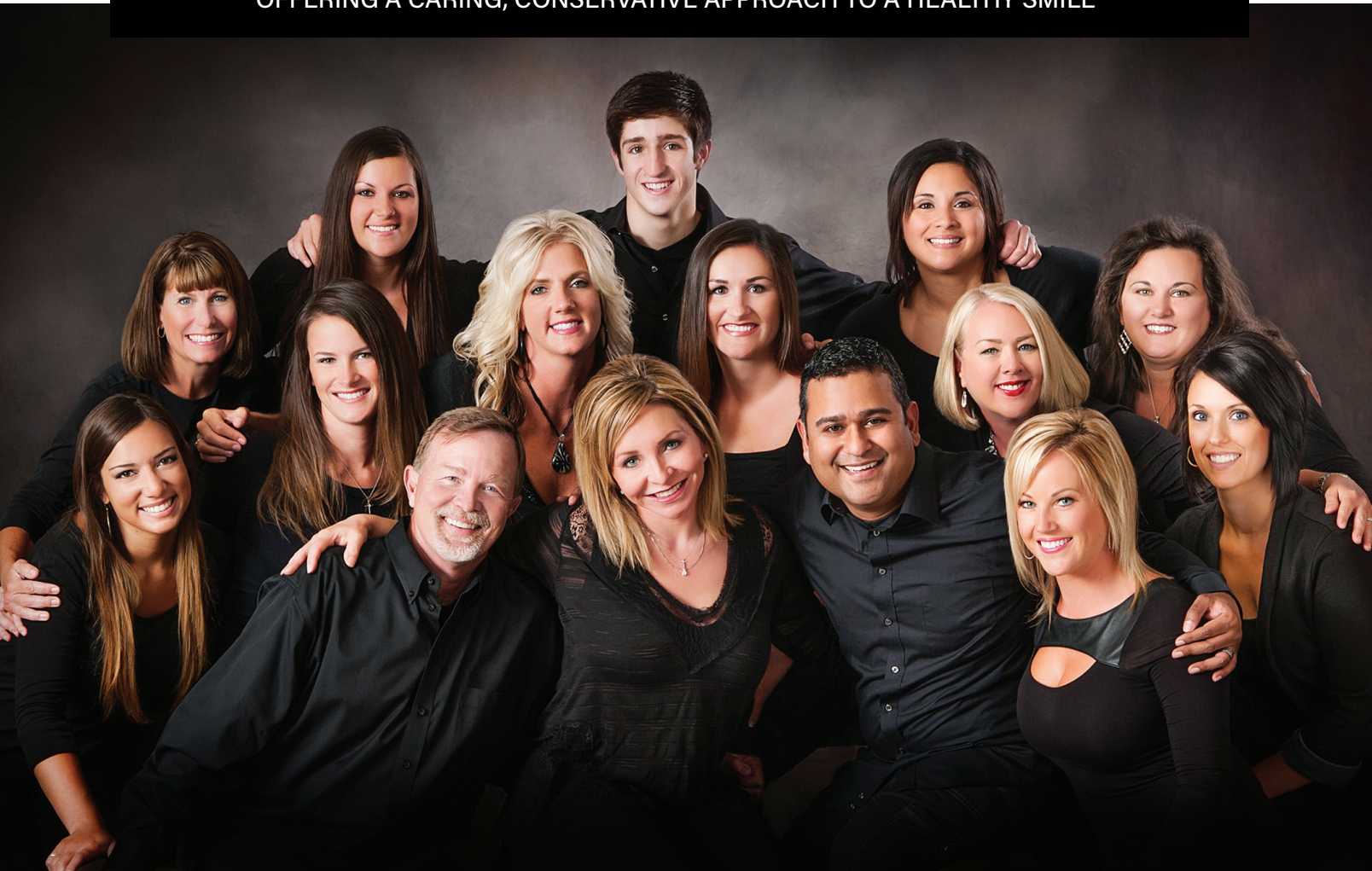


JUNGMEYER and SURESH

Dental Enterprises LLC

OFFERING A CARING, CONSERVATIVE APPROACH TO A HEALTHY SMILE



Growing up in Eldon, Missouri, Shelia Jungmeyer, D.D.S, worked alongside her father in his heating and air conditioning business all throughout high school and watched her mother manage her own real estate brokerage. When it came time for her to branch out on her own, Jungmeyer knew from her early experiences that she had the business acumen as well as the medical expertise to run a successful dental practice.

Jungmeyer graduated with honors from the University of Missouri-Kansas City School of Dentistry in 1992 and joined two experienced dentists—Dale Ewing, D.D.S, and Merle Nunemaker, D.D.S—in their dental practice for four years. In 1996, she opened her own practice in Lee's Summit. In 2001, Jungmeyer moved her practice to its current location at 246 NE Tudor Road in the Tudor Square offices across from Lee's Summit North High School. In 2012, she was joined by Dhyanesh Suresh, D.D.S, and rejoined by Nunemaker. Together, the three form the dental practice Jungmeyer and Suresh Dental Enterprises LLC.

The unique qualities and interests each dentist brings to the practice creates a well-balanced business trifecta, Jungmeyer

explains. Jungmeyer handles the ins and outs of running the dental business. Suresh, a brilliant researcher at heart, is on the cutting edge in his knowledge of the latest technology and procedures and is a member of a multispecialty dental think tank. Nunemaker is past president of the Missouri Dental Association and serves the community by providing dental care to those with limited health care access through Missouri Mission of Mercy (MOMOM).

“Together, we have it all,” Jungmeyer says. “The people you work with and the patients you work on are what makes this profession a joy.”

The three dentists see patients five days a week, from 8:30 a.m. until 5 p.m. They take a late lunch from 1 p.m. to 2 p.m., so it's convenient for patients to schedule an appointment over their noon to one p.m. lunch hour. Services offered include general and cosmetic dentistry, dentures, implant restoration and appliances to reduce the incidence of snoring. New patients of all ages are welcomed, and the practice accepts insurance.

CONTINUED >



The key to a long and lasting smile is prevention and frequent maintenance visits, Jungmeyer says.

"We want what's best for the patient in the long term when we consider treatment," Jungmeyer says. "You start out with perfect teeth, and we try to help you keep those intact as long as you can. Sometimes the most conservative approach is the best approach."

Jungmeyer appreciates the long-term patients that she has gotten to know in her more than 25 years of practice in Lee's Summit. She still treats patients that she first saw in her second year of dental school at UMKC. Jungmeyer and her son and daughter are even taking pilot lessons from one patient, an 88-year-old flight instructor.

Jungmeyer says her practice will continue to invest in the Lee's Summit community as it grows.

Jungmeyer and Suresh Dental Enterprises LLC is involved in the Lee's Summit Chamber of Commerce, the American Dental Association, the Missouri Dental Association, the Greater Kansas City Dental Society, the Eastern Jackson County Dental Study Group, SPEAR dental education and Missouri Mission of Mercy.

To make an appointment, call 816.554.1600.